



HCA Tech Note 601

TP-Link Smart Wi-Fi Plug and TP-Link Smart Wi-Fi LED Bulb

This technical note provides Instructions for adding two classes into HCA for support of these TP-Link device types. Add the class appropriate for the hardware you have or both if you have both device types.

Note: The Plug supports, On, Off, and Get Status. The LED Bulb supports On, Off, Set-Percent, and Get-Status. No color support for the color bulbs are available.

Note: You must be using HCA 14.2.53 or later



Getting Ready

Before working with HCA, make sure that you have already completed the procedure outlined in the instructions that came with the device using the TP-Link Kasa app. You will also need to know the IP address of each device. This can be found using your router's interface in a "Device Table" or similar.

The TP-Link devices get their IP address from the DHCP server in your router. Most modern routers support "IP Reservations" – sometimes called "sticky MAC" which assigns them the same IP address each time they request one by



HCA Tech Note 601

checking their MAC address. If your router has this feature, then great. If it doesn't, there may be a way to configure it so that the IP address assigned is "sticky" Like IP reservations, but you have to set it up manually. For example, Google Wi-Fi has this.

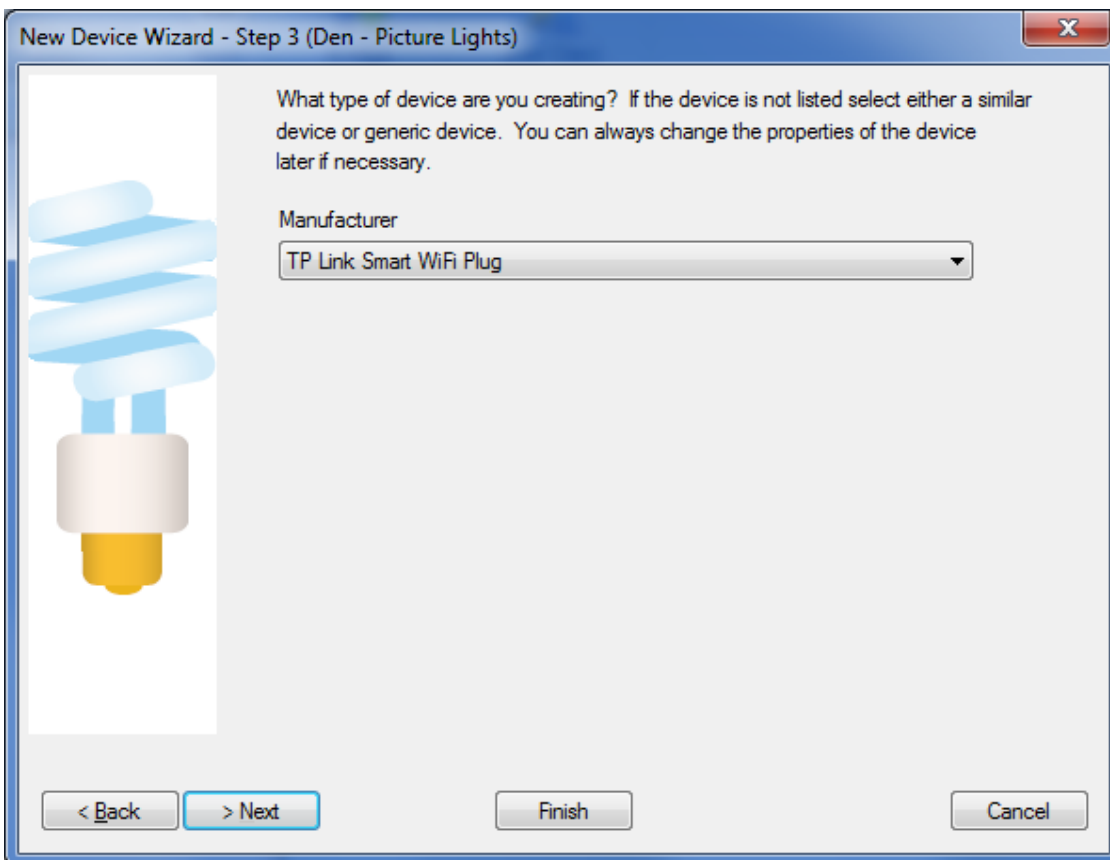
Step 1

In the Design ribbon category, press the Library Browse/Import button to access the online library. Then locate the dimmable and non-dimmable TPLink classes. The lower section of the library browser shows the documentation for the class. All the programs that are part of the class are listed with instructions on their use.

Press the *Import Selected* button. The class programs are added to your design and added to the import report displayed.

Step 2

Add devices using the new Device Wizard as usual. In step 3, select the class name for the device type you have.



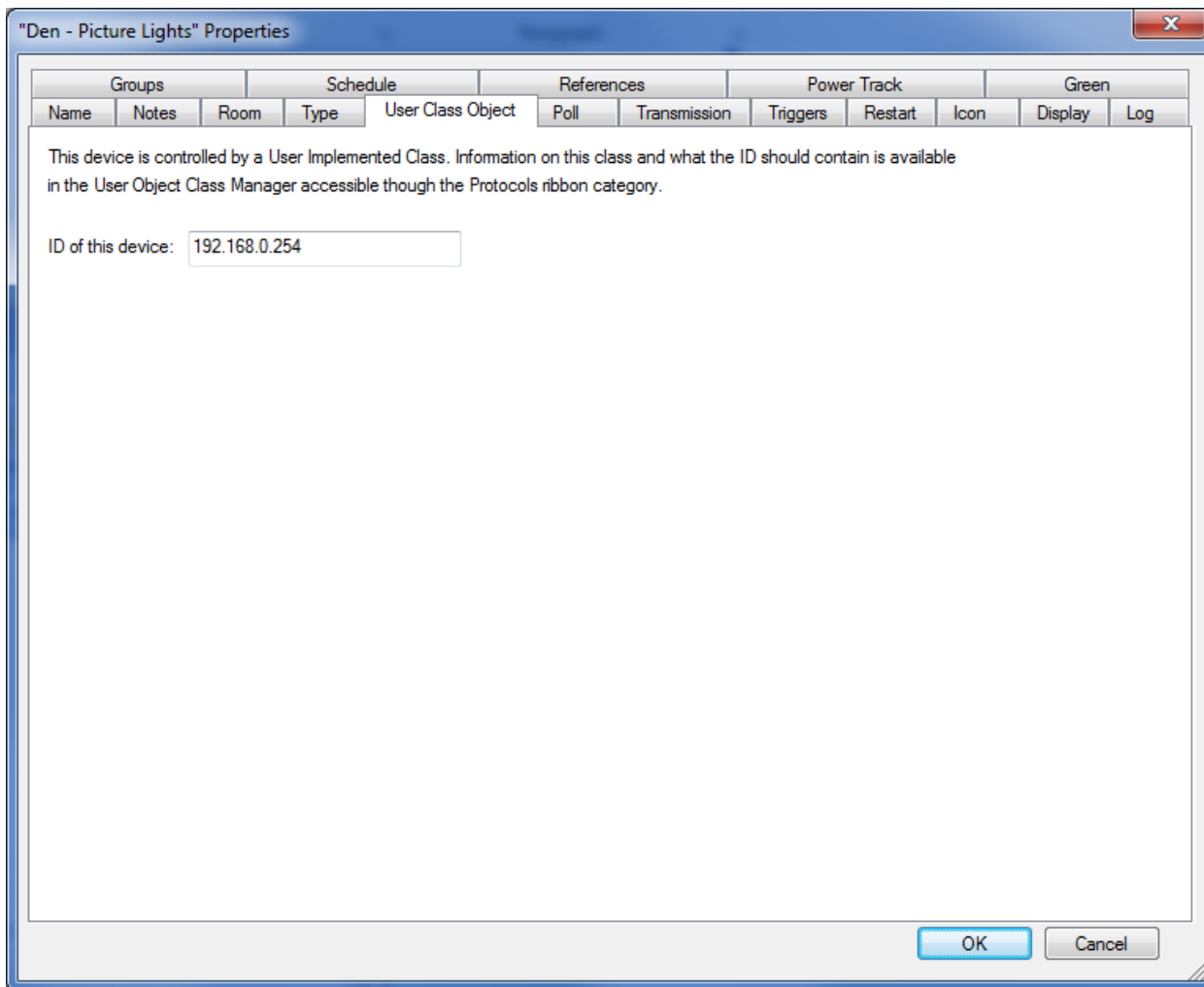
And then complete the Wizard as usual.



HCA Tech Note 601

Step 3

Open the properties of the device and on the “User Class Object” tab enter the IP address of the device. Figure that out from your router or some such. Do this for each TP Link device you have added. The IP addresses will be different for each device. They are entered in the normal 4-part address form used for IP addresses.



Close the properties dialog with OK.

Done!

You can now use the device as you would any other HCA device in program, schedules, and from the User Interface.

##end##