



HCA Tech Note 115

Tech Note 115: Moving to a new computer (updated 9-June-19)

The first step to moving HCA to another computer is to install HCA on the new computer. Use your registration code at the support web site to download the zipped installer. Unzip with your password and install as usual.

File Inventory Tool

On the old machine start HCA and load your design file. On the “Tools” ribbon category is a button named “Design Backup Assistant”. This can help find places in your design where files other than your design file – the .HCA file - are referenced.

The tool looks for:

- Having Power Track enabled for one or more devices
- Display DXF or Image Backgrounds
- IR Keypad definition files
- Display HTML templates
- File Format templates
- Image Tile picture files

When examining programs, it looks for these elements which can contain paths to files:

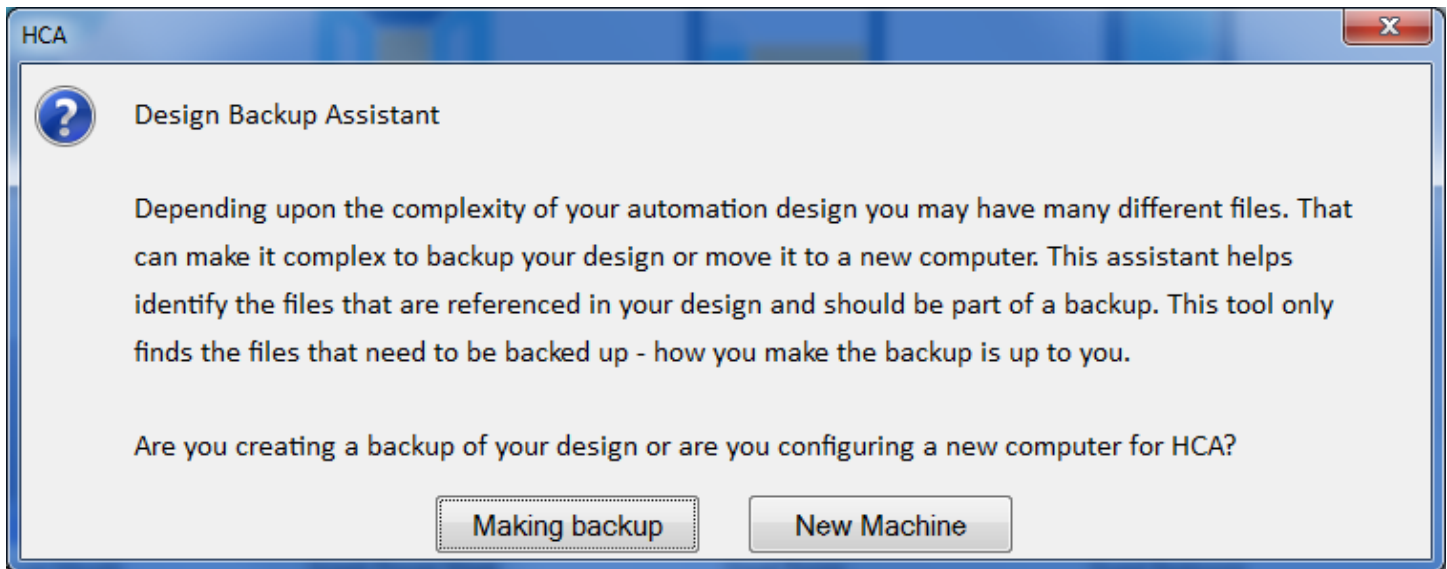
- Play-Sound
- Read-Data
- Run-Program
- Script
- File-Format

Note that the tool may not find all uses of files referenced in your design, so take what it says as a starting point. There may be other files to move as well.



HCA Tech Note 115

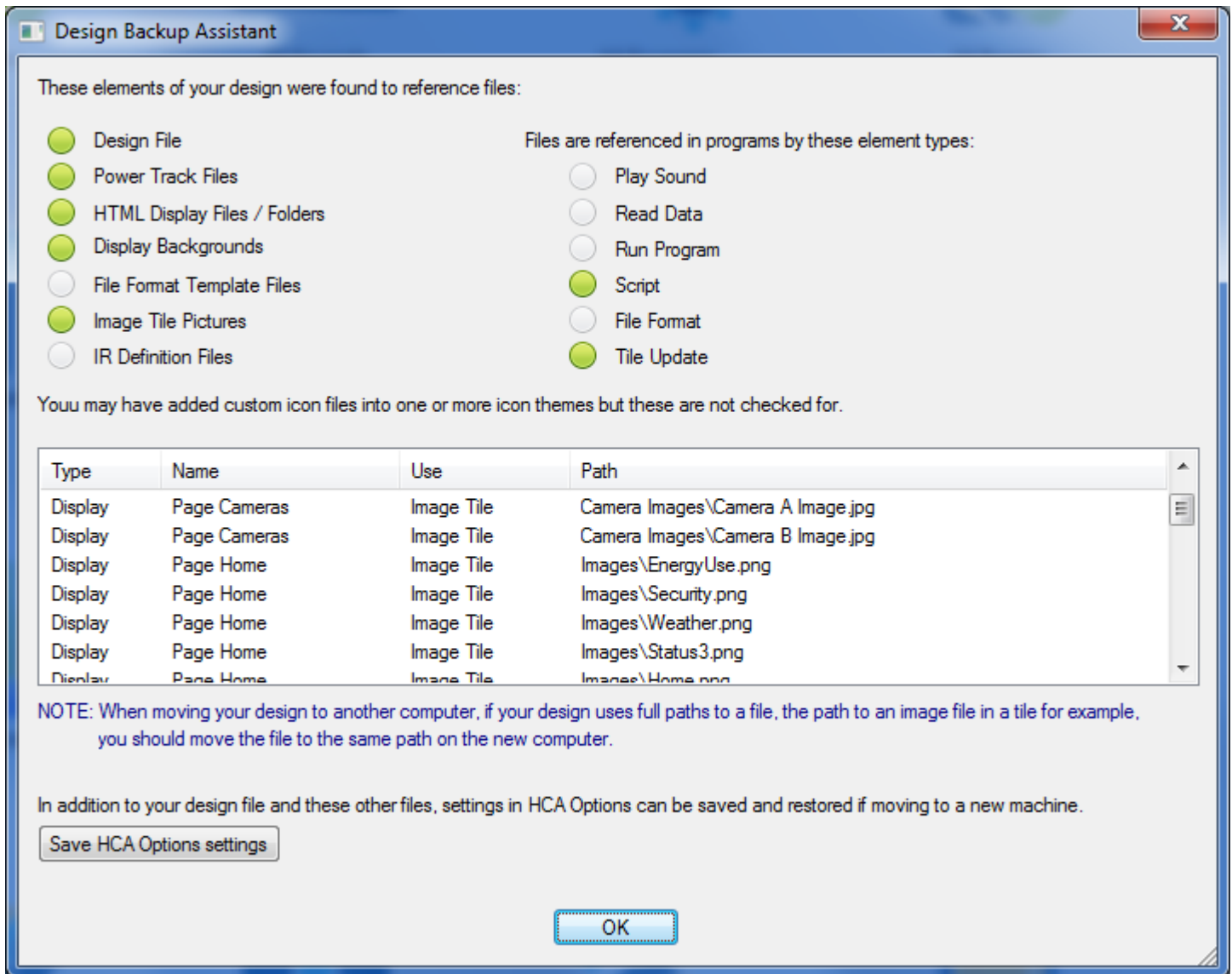
When the Backup Assistant starts it first asks if you are making a backup or getting the new computer set up.



On the old computer, press the *Making Backup* button.



HCA Tech Note 115



The top section shows the areas it found that you should be concerned with. The lower section shows the paths to the files that are referenced.

As you look at these paths it is a good idea, when possible, not to use a full path (starting at the disk root, like "C:") to locate an external file, but rather use a relative path (starting in the folder where the design file is stored). This will make it easier for your design file to be moved to the new machine and makes client-server work better as well. The above example does that.



HCA Tech Note 115

For example, don't refer to a display image background as:

```
C:\users\kimberly\hca\images\kitchen.jpg
```

But instead use this, where "images" is a sub-folder of the folder where the design file is.

```
images\kitchen.jpg
```

If you use HTML displays, you may want to look at tech note 105 as this discusses relative paths in greater detail.

One thing the Backup Assistant doesn't do is actually move files. It just points out what needs to be moved and it is up to you to do the file moving.

Logs

If you want to keep all the historical logs, you should copy the Logs sub-folder in the HCA documents area from the old machine to the new machine.

Power Track

If you want to keep all the historical power data, you should copy the Power Track sub-folder in the HCA documents area from the old machine to the new machine.

IR Key definition files

If you are using IR devices, the Global-Cache definition files should be moved as well. Start in the Interfaces ribbon category, Global Cache button. The paths to the definition files are shown there.

Custom Icons

If you have added any icons to any themes – or created new themes – those files must also be moved from the old machine to the new machine. ***The assistant doesn't point this out.***

Remote Access

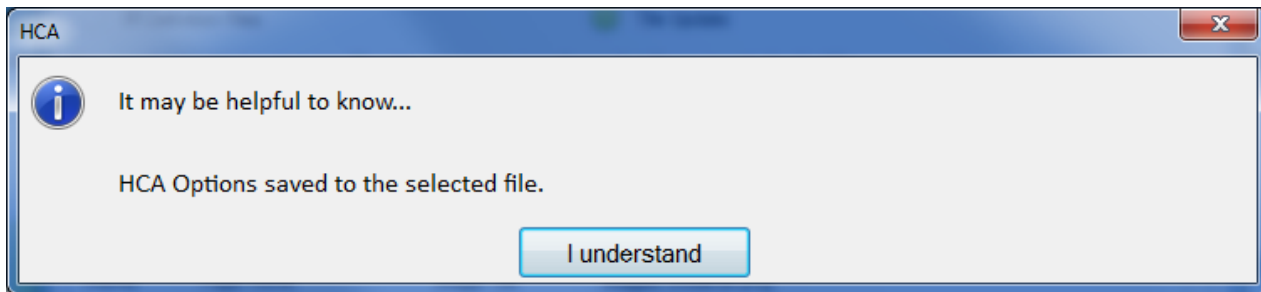
If the HCA Server is being used on the new machine, any clients that reference the old machine by IP address will have to be changed to use the IP address of the new machine. Also, don't forget to change port forwarding in your router to forward the HCA Server point to the new machine!

The Backup Assistant can also create a file containing all the settings that you access from the *HCA Options* dialog. These settings aren't stored in your design file but rather in the system registry.

When you press the *Save HCA Options Settings* button in the Backup Assistant, a File-Save dialog lets you pick the location and the filename to save the HCA options file in. This file is quickly created:

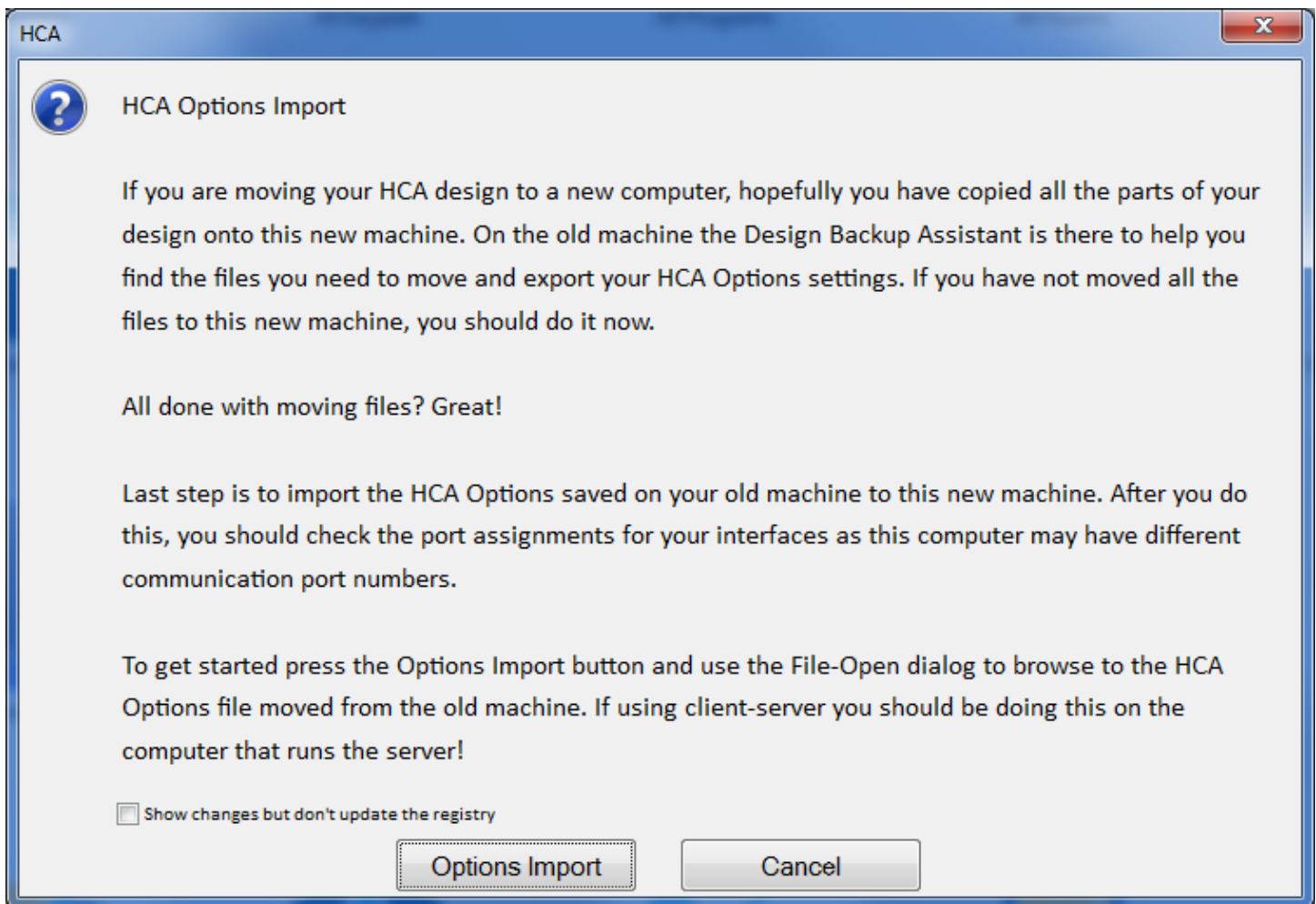


HCA Tech Note 115



You should then move your design files, all the referenced files, and the saved HCA Options file to the new computer.

When you start HCA on that computer start the backup assistant again and this time click the *New Machine* button. One of the many “helpful info” messages appears:





HCA Tech Note 115

When ready, press the *Options Import* button to open a File-Open dialog to browse to the HCA options file.

NOTE: If you are concerned as to what it will do, you can tick the “Show changes” checkbox and it shows what options it is updating but doesn’t actually make changes to the registry. It may look a bit like gibberish as the names it shows are the internal names of the options. You can also start the Options Import again to do it “for real”.

When it is complete, make sure that you take some time to review HCA Options to make sure that the new machine settings are appropriate. Some settings like interface port assignments might not be correct as these can differ from the old machine to the new.

##end##