

HCA Note 300: Using the CM15 with HCA and Windows 7 and 8

NOTE: This technical note has been made obsolete by the discontinuation of support for the CM15. See the V15 release notes.

In order to use the CM15 with HCA under Windows 7 and Windows 8 you have to do a bit of work to get the HCA device driver installed. Unfortunately, Windows really hates this as it wants all the drivers to come from the Windows Update site and that will get you the ActiveHome driver which doesn't work with HCA.

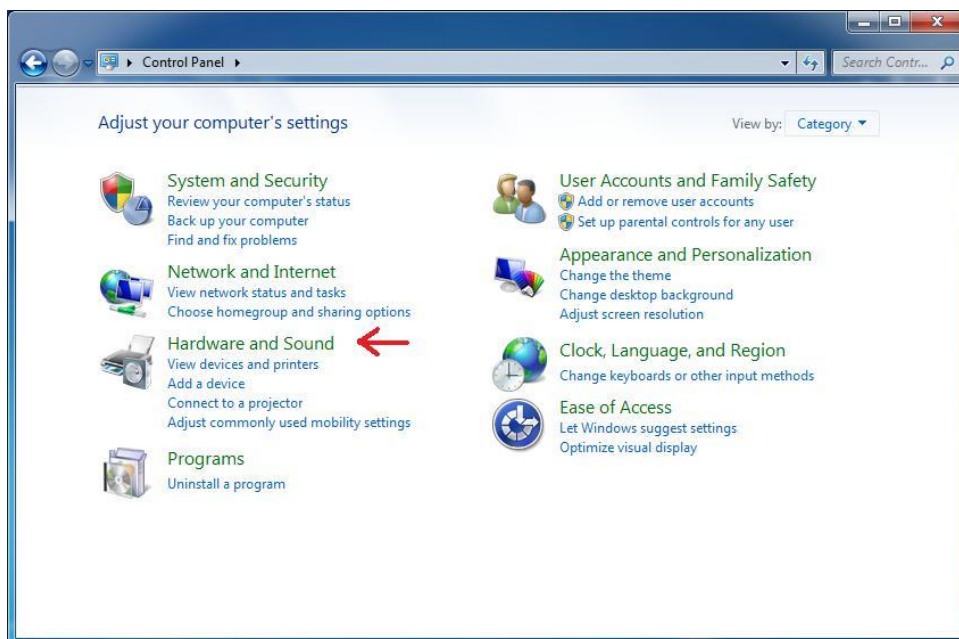
And to make matters slightly more difficult we have to stop Windows Update replacing the HCA CM15 driver with the one from the Windows Update site.

The first thing to do is to connect the CM15 to your computer and let Windows install the driver for it. It will be the wrong driver but we have to start someplace.

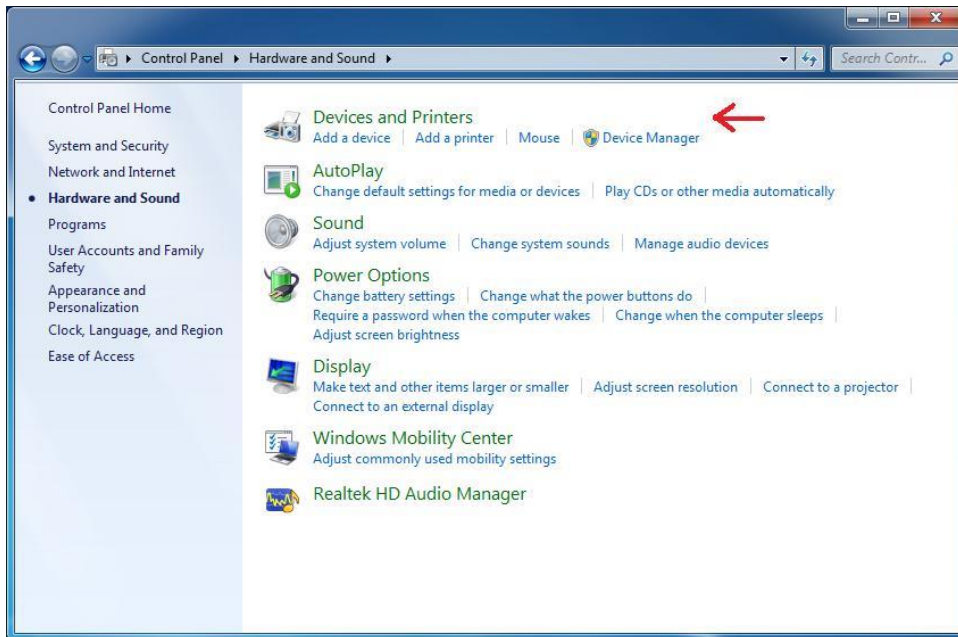
Once that's done now let's work on configuring Windows so that we can get the HCA CM15 driver installed.

[Windows 8 Note]: The screen images in this tech note are from a Windows 7 machine but they are very similar to Windows 8. You can follow the same procedures. Any differences will be noted. The 1st step is to get to the Windows 8 control panel. If you don't know how to do this – they do not make it easy – do an internet search for “Windows 8 Control Panel” and you will find the various ways to open the control panel.

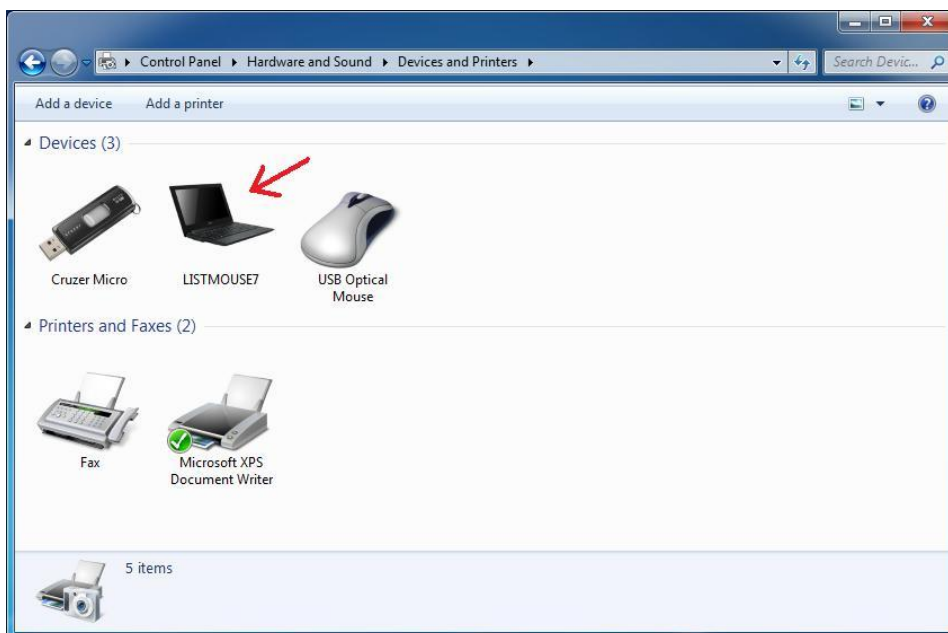
Open the control panel and click on “Hardware and Sound”



Then click on “Devices and Printers”.

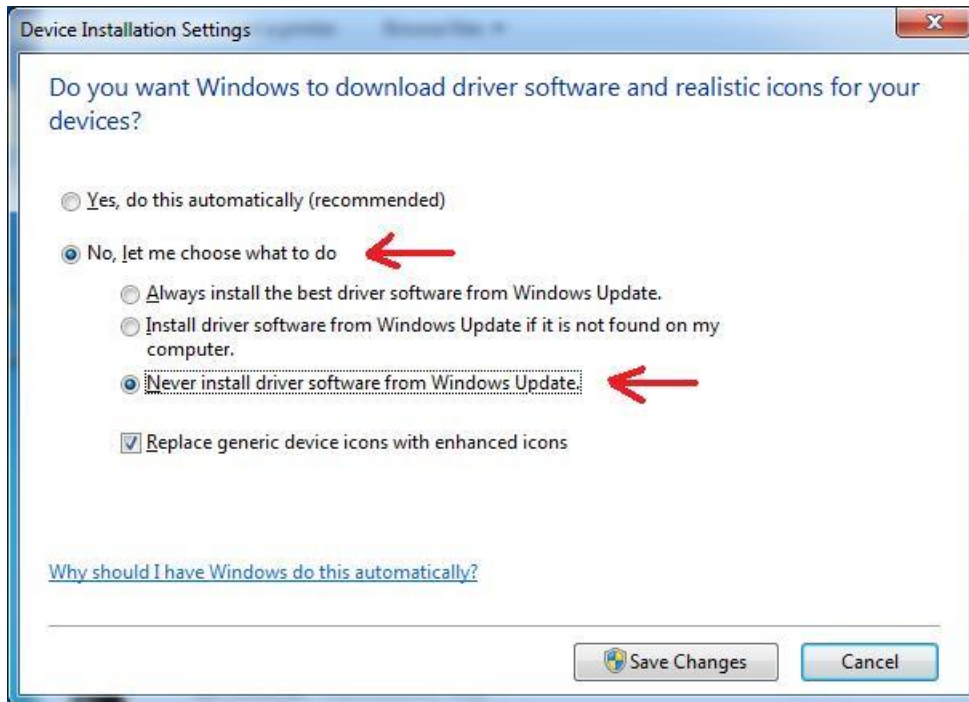


This may take a while to appear and when it does what it shows will be different from this picture because your hardware is different than the computer used for this example.



You need to find the icon for your computer. It is listed with the name of your computer. In this example it is the laptop icon labeled “LISTMOUSE7”.

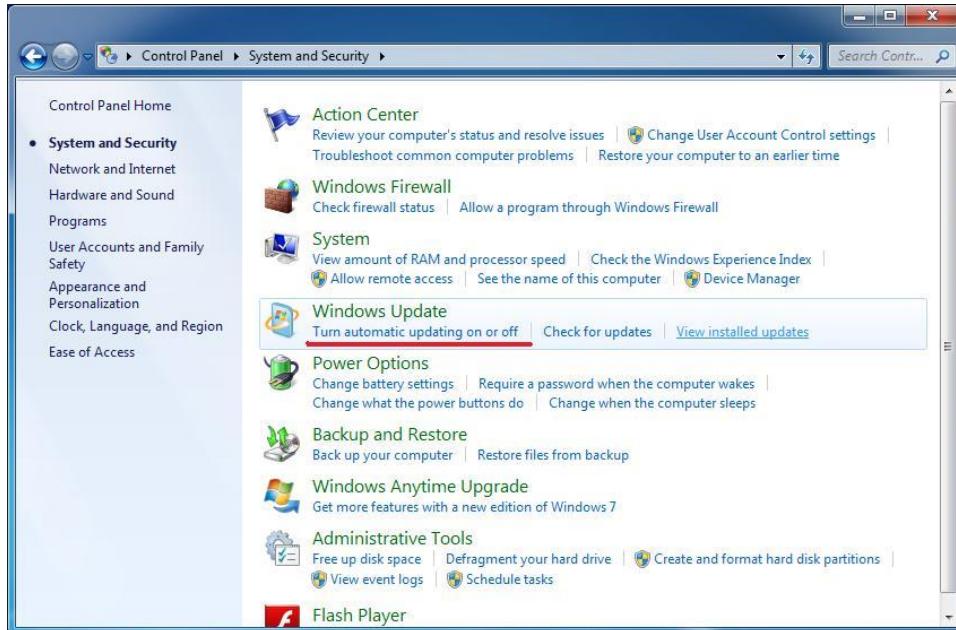
Right click on it and select “Device installation settings” from the popup menu. This dialog appears.



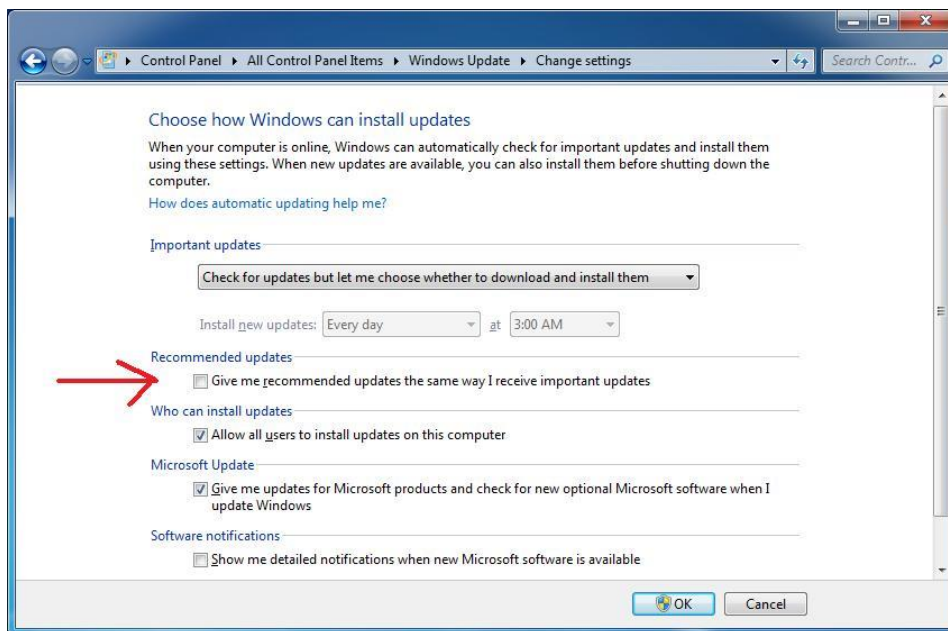
Choose the option that says “No, let me choose what to do” and then the option “Never install driver software from Windows Update”. Press Save Changes. Windows Defender may ask you to confirm this. Go ahead and do that. In fact, anytime Windows Defender wants you to confirm something during this procedure go ahead and do that confirmation.

NOTE: After you get the HCA CM15 driver installed, you should repeat these steps and reset the option to go back to the “Yes, do this automatically” choice.

Now go back to the control panel home and click on “System and Security” and then click on the “Turn automatic updating on or off” below “Windows Update”



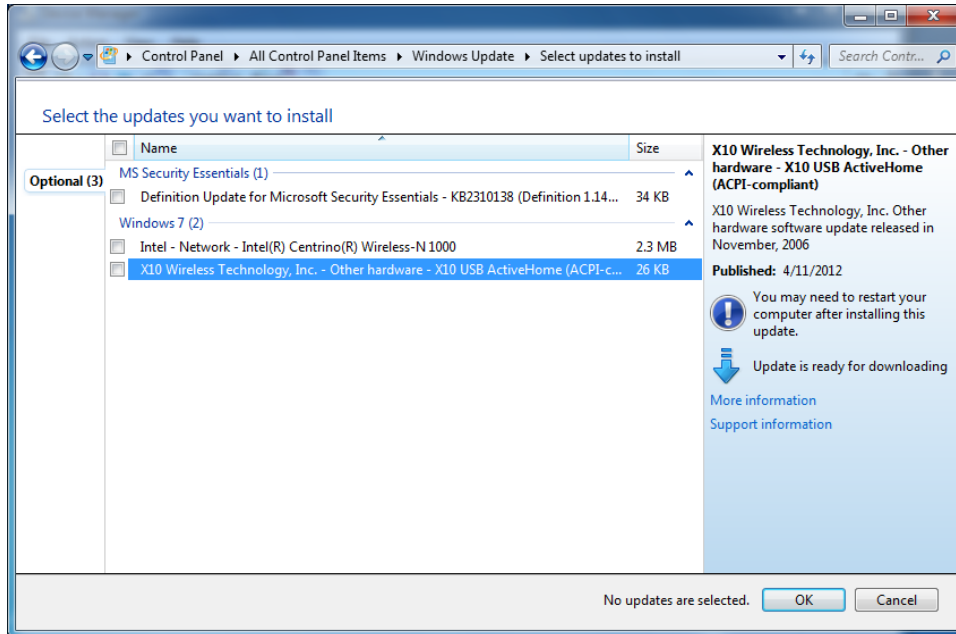
The “Change Settings” dialog appears.



The KEY thing to do here is to make sure that the “Recommended updates” option is **NOT** checked. If this is checked then the next time Windows does an update it will replace the HCA driver with the ActiveHome driver and **you don’t want that to happen**. You can always go look at the recommended updates in Windows Update and choose the ones you do want. Just don’t choose the CM15

ActiveHome driver. The option to “not automatically install recommended updates” needs to stay this way and can’t be set back like the option to install drivers from Windows Update as explained above.

Just for your knowledge, this is what the optional updates list looks like on this example computer. You DON’T want to check the box next to the “X10 USB Active Home” driver to install it!



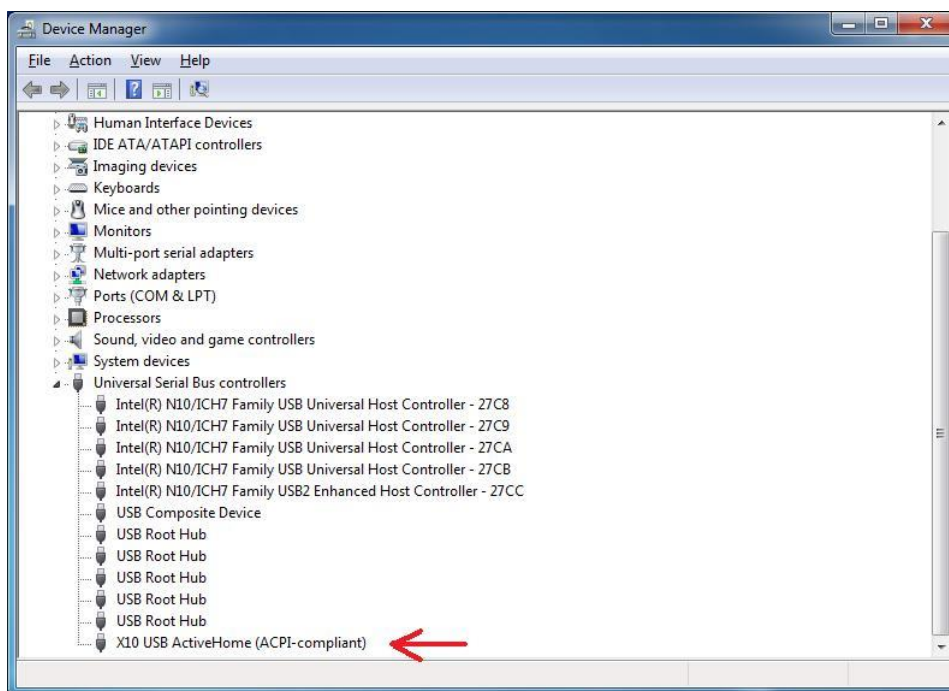
[Windows 8 Note]: In order to use the HCA CM15 device driver you need to configure Windows 8 to allow use of an unsigned driver. The procedure is simple but takes too many steps to show here. Use your favorite search engine looking for “windows 8 disable driver signature verification” and find one of the references and follow the directions. Do this now before you proceed.

Now follow this link to download the zip file that contains the HCA CM15 driver. The file is called winusbinf.zip. Create a folder in your documents area called “CM15” and save the file into that folder.

www.HCATech.com/download/CM15/winusbinf.zip

Right click on and select “Extract all”. The “Select a destination” dialog should show a path to the CM15 folder in your documents area and ending in a sub-folder called winusbinf. If it doesn’t show that then change it to show that. Press the “Extract” button. It extracts 32 items.

Start the Control Panel again, click “Hardware and Sound” as before, but this time click the “Device Manager” link below the “Devices and printers” heading. You want to expand the “Universal Serial Bus Controllers” branch.



Right click on the “X10 USB ActiveHome (ACPI-Compliant)” line and select “Uninstall” from the popup menu. A popup dialog will confirm that you want to do this. **Make sure** that you check the “Delete the driver software for this device” option and then press OK. The device manager refreshes the display when done.

Close the device manager and control panel.

Now disconnect the CM15 from the computer wait a minute and then reconnect it.

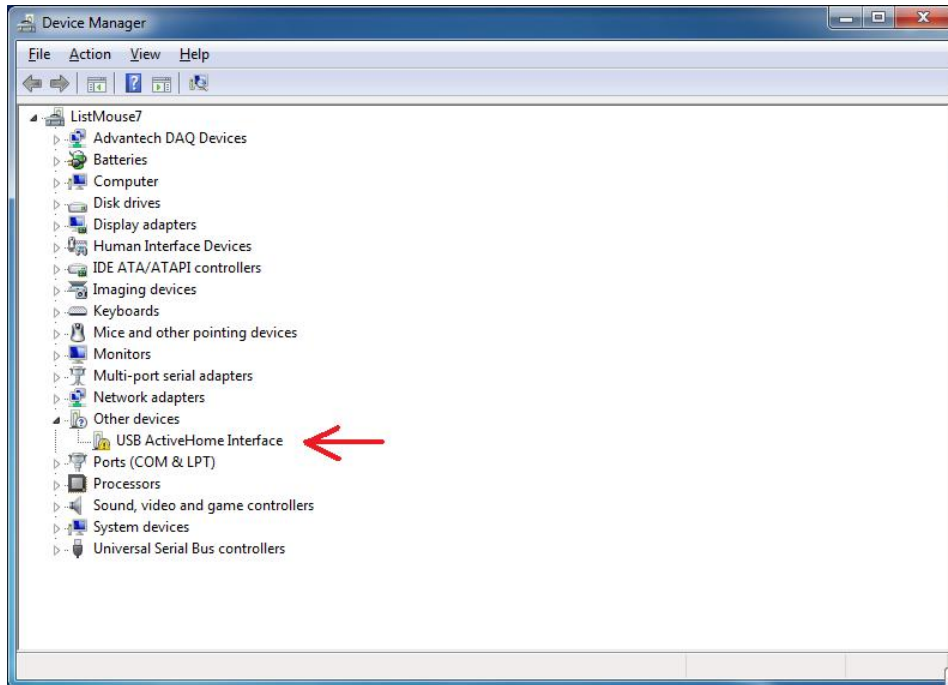
Windows should popup a message from the notification area saying “Installing Device Driver Software” and then very quickly it will show “Device Driver was not successfully installed”. Just close that notification, you need not click on the “click here for details”.

NOTE: You may need to plug the CM15 into a different USB port to get this to happen.

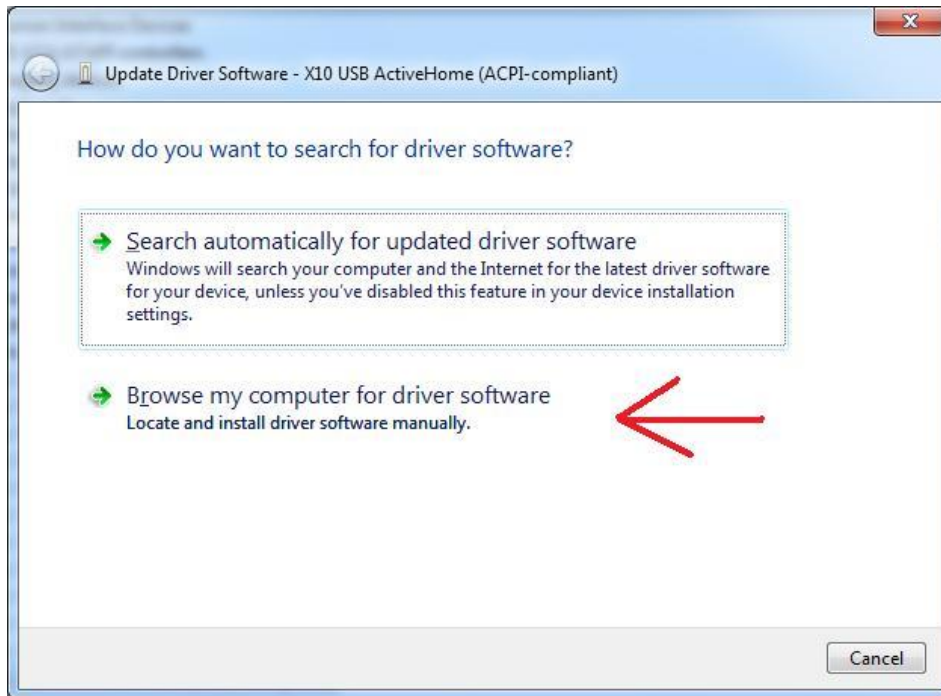
[Windows 8 Note] Windows 8 may not say anything. Or it may. It depends. But it doesn't matter. What happens is that the USB ActiveHome Interface will appear under "Other Devices" as expected.

Now open the Device Manager again by starting the Control Panel and then opening the Device Manager as we did above.

You should now see "Other Devices" and below that "USB Active Home Interface".

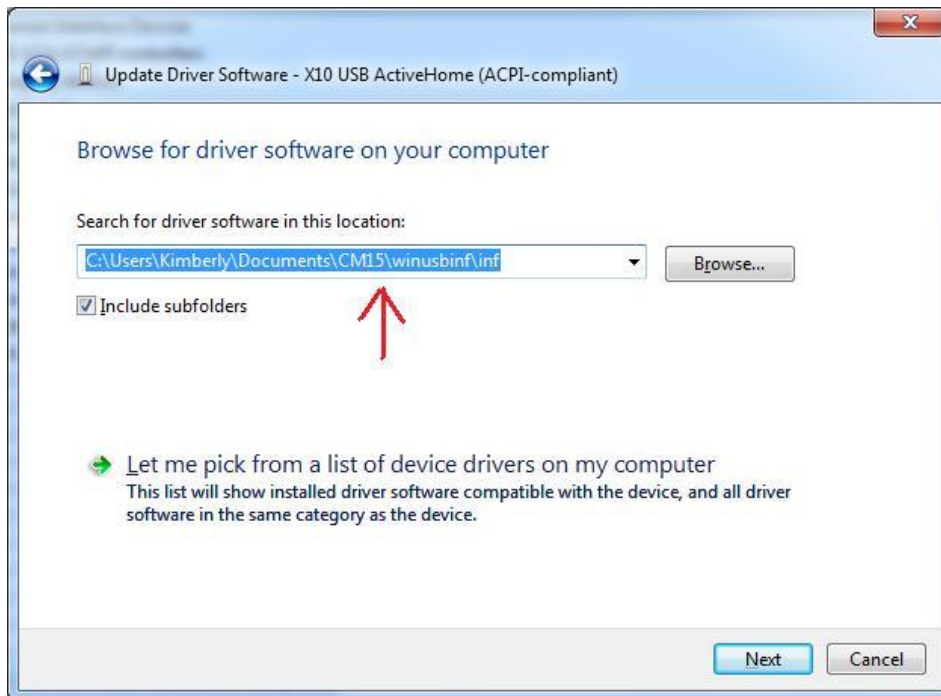


Right click on the "USB Active Home Interface" branch and select "Update Driver Software" from the popup menu.

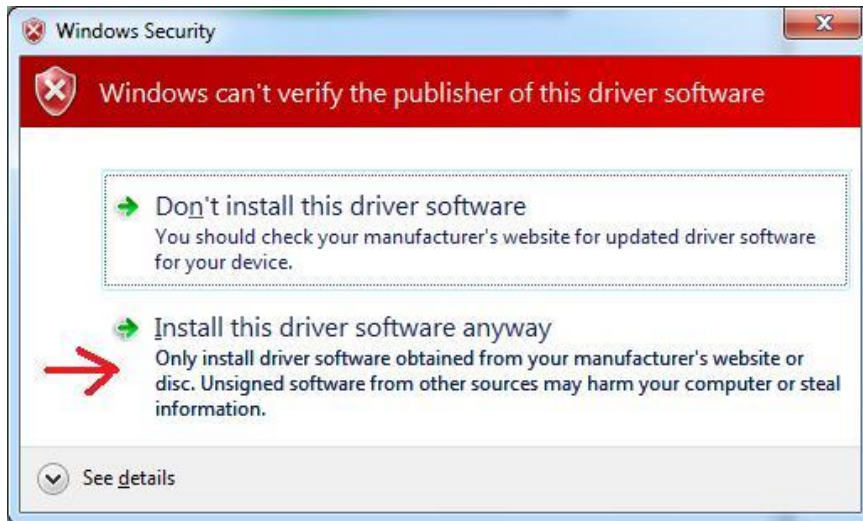


Press the “Browse my computer for driver software” big button

You want to browse to the “inf” sub-folder in the “winusbinf” folder that got created by the zip file extraction.

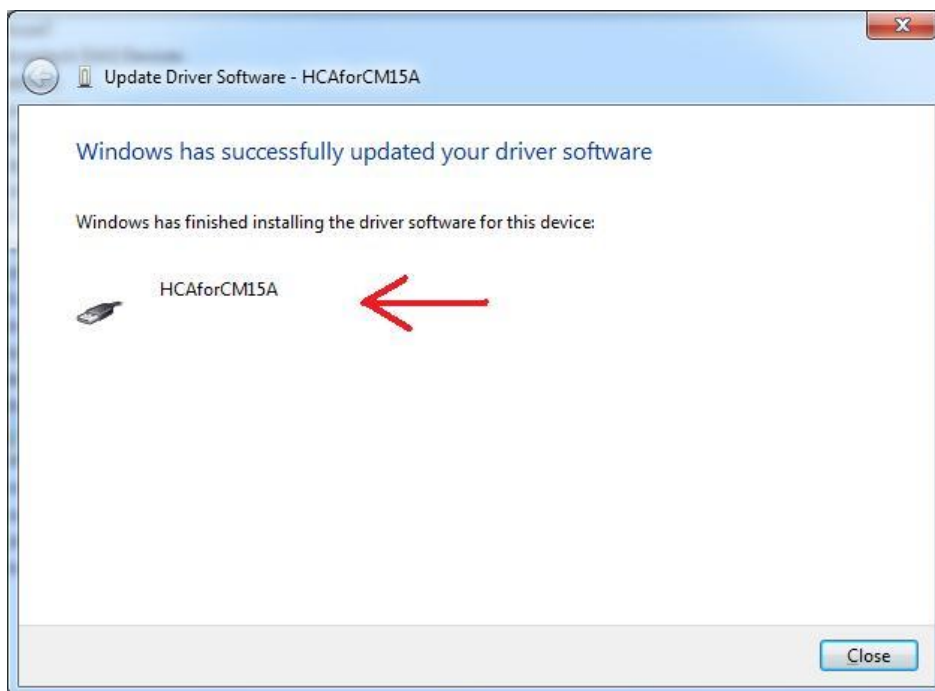


And click “Next”. Windows shows “Installing driver software” and then a VERY SCARY dialog appears:



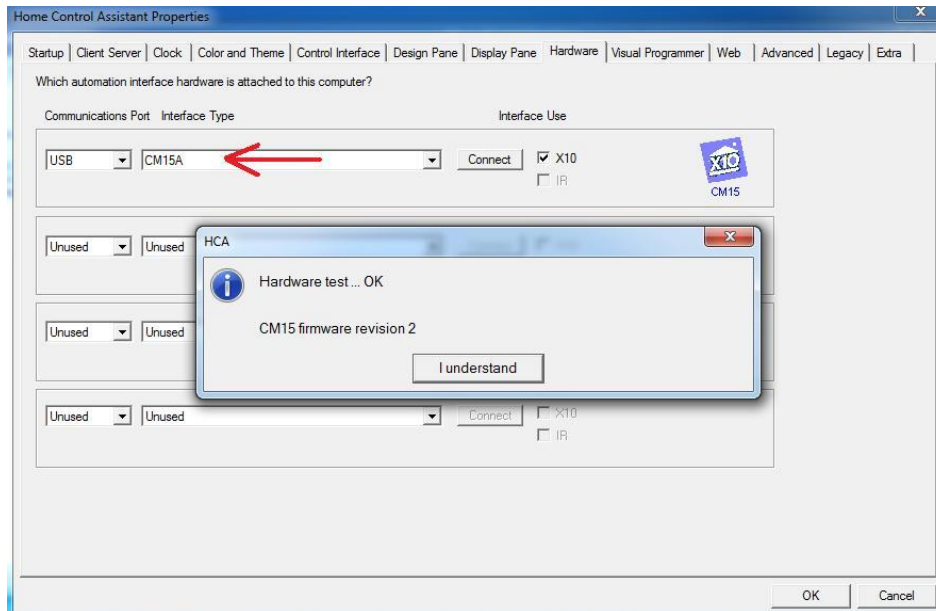
Click on the "Install this driver software anyway" big button. The driver is OK, really!

Windows works for a while – may be several minutes - and then displays:



Press the Close button and then close the Device Manager and then close the Control Panel.

Now we are finally ready to start HCA! In the Interfaces category, press the Configure button, choose CM15A as the type and press the connect button. It should connect ok and display the firmware version.



At this point you can go and reset the option in Windows to automatically install drivers from the Windows Update site if you want. **But, again, do not reset the option in Windows Update to automatically install optional updates.**

Have fun with your CM15!