



# HCA Tech Note 207

## Working with the Insteon Mini Remote

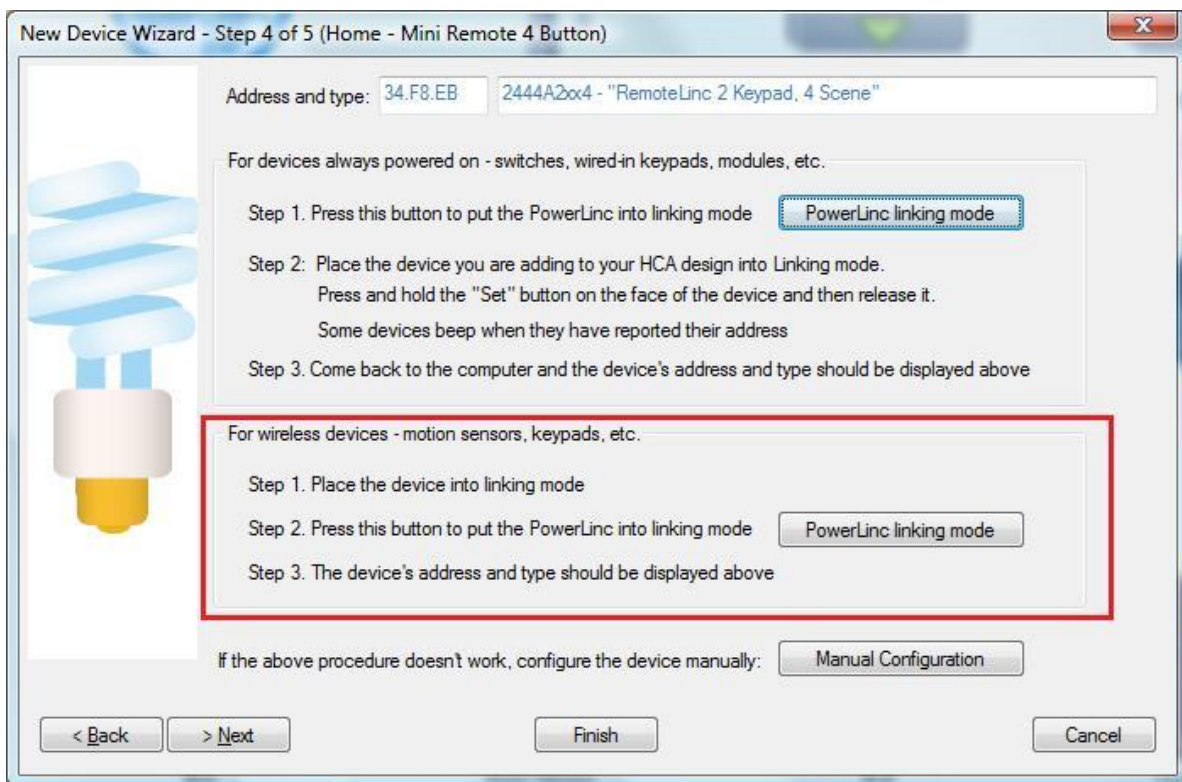
<http://www.smarthome.com/insteon-2342-232-mini-remote-4-scene.html>

<http://www.smarthome.com/insteon-2342-222-mini-remote-8-scene.html>

<http://www.smarthome.com/insteon-2342-242-mini-remote-switch.html>

Using the Mini-Remote with HCA starts by adding it to your design. You need to be able to access the "Set" button on it to establish a link to it. The Set button is on the bottom of the device in a slightly recessed area next to the mini-USB charging port. Press and hold until the LED on the front blinks.

In the Add Wizard on step 3 choose "Insteon" as the manufacturer and then press the Next button. In step 4 before pressing the dialog button to put the PowerLinc into linking mode, place the device into linking mode by pressing and holding its set button until it enters linking mode. Then press the PowerLinc button in the dialog to complete the link.



Insteon devices send commands that HCA receives. These commands are things like On, Off, Fade Start, Fade Stop, Status, etc. The message, in addition to the command, contains what is called the "group number". A group number is just a method by which the message identifies the source of the command from the possible



# HCA Tech Note 207

subunits of the device. For a keypad, the group numbers are used to identify which button is pressed. In the case of this device there are 1, 4, or 8 different groups depending upon the model of mini-remote.

When you create a trigger in HCA you specify the device, the group, and the command. When a message is received that matches all three of these then the trigger happens and the program starts.

Before HCA can receive messages when buttons are pressed they first must be linked. Place the mini-remote into linking mode so that it is listening, and then on the linking tab press the button to create the link for that button. The linking button shows "HCA" if that button is already linked.

**Keypad Button → HCA** Device initiates the linking and once complete the device sends commands that HCA can use as program triggers

When you link an Insteon input - like a keypad button - to a device, the device is controlled when the input transmits. In this same way, you can link an input to HCA. When the input transmits, HCA receives the Insteon message and you can use the receipt of the message as a trigger for a program.

To link an input to HCA, press the button on the right you want to link and follow any directions

HCA HCA  
C HCA

It is a good idea to name the keypad buttons on the Key Names tab with text that identifies their use. This helps later when you create triggers and also when you access the keypad in the HCA client applications.

When displayed by the Control Interface, pages created by the Web component, and Mobile application, an image of the device's transmit components is shown. If you have scenes attached to those buttons and rockers, then using that "glass keypad" causes HCA to control those same scenes.

You can label those buttons and rockers with text to help remind you what those functions are.

The amount of text available for each button is limited, so be concise.

A

B

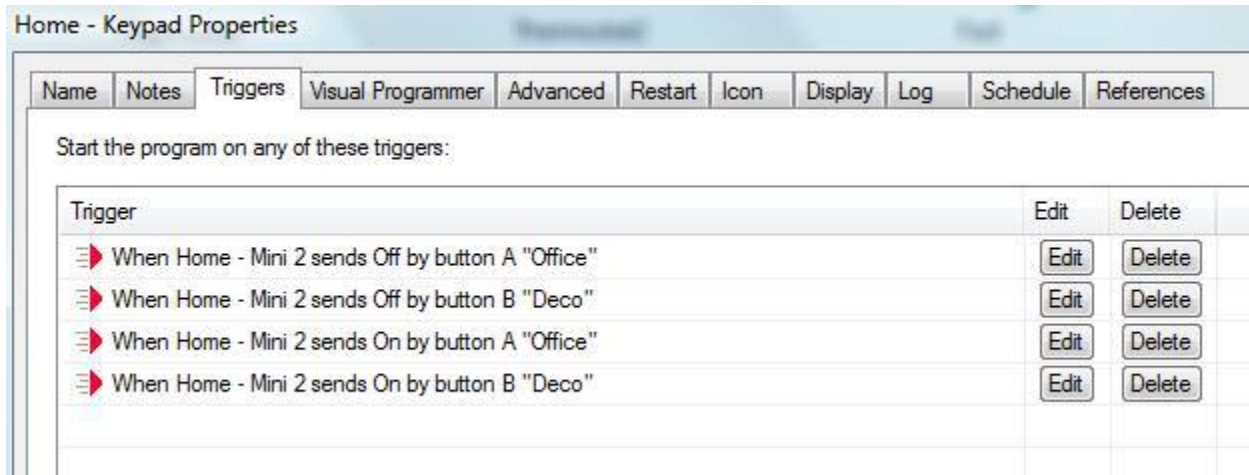
C

D

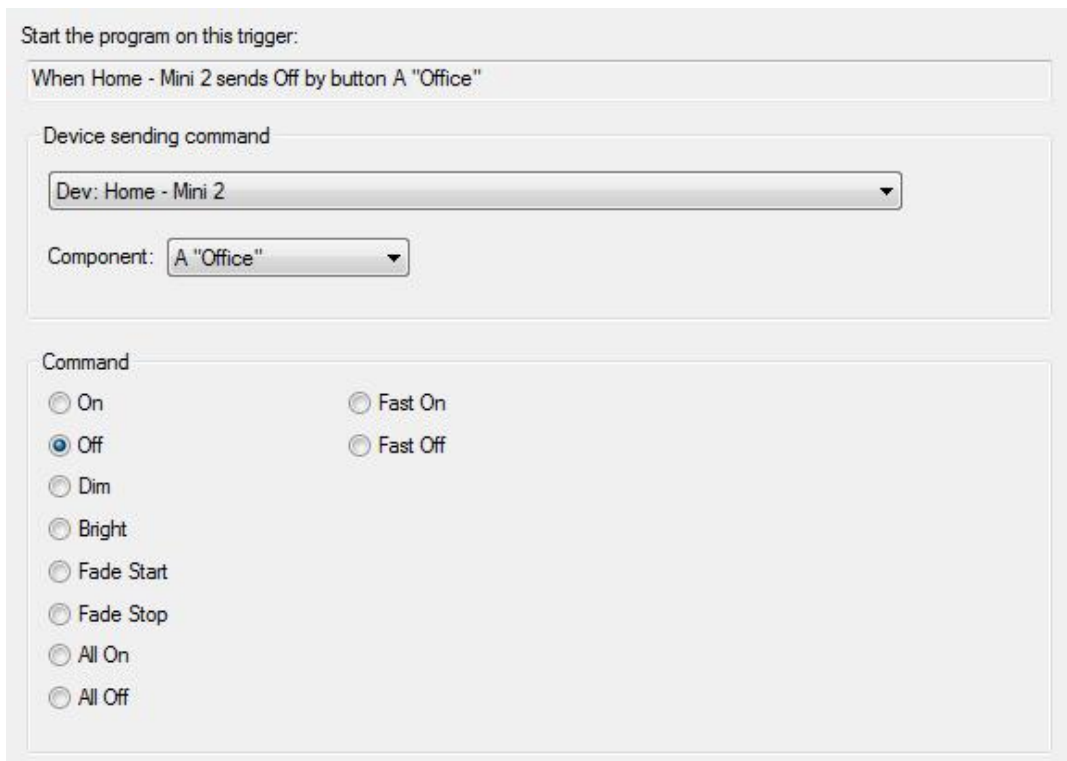


# HCA Tech Note 207

Once the linking is complete then you can create program triggers for the messages you want to handle. For example this program triggers when the "Office" and "Deco" buttons are pressed on and off. Within the program you can easily test the starting trigger to see what button has been pressed.



When you configure a trigger you provide the device, button and command.





# HCA Tech Note 207

If you want to trigger on a double-click of the on or off action, use the "Fast On" and "Fast Off". Using this you can have a program that triggers on each button with single-tap on., single-tap off, double-tap on, and double-tap off.

As you can see in the screen images of the trigger dialogs above that the key names you enter into the device properties show when creating triggers. Using key names you don't have to remember if you want to trigger on button 1 or button 2.

In the control user interface, the buttons on the mini-remote can be "pressed". When this happens the devices that are linked to the keypad button are controlled.



## Special Note if you change to 4-Button mode:

If you are using the "2342-222 Mini Remote – 8 Scene" and, following the SmartHome directions, place it into 4-Button mode you must tell that to HCA. Open the properties of the device and on the "Type" tab, change to "2342 Mini Remote-4Scene"

Manufacturer

Insteon

Kind

Keypad

Model number and description

2342-232 Mini Remote - 4 Scene



# HCA Tech Note 207

---

Then close the device properties with OK. Now when creating linking or triggers the buttons will be called A, B, C, D. On the keypad that are arranged as:

A OFF	A On
B OFF	B ON
C OFF	C ON
D OFF	D ON

If you ever recapture the keypad address you must change the type again as the address recapture updates the type.

##end##