



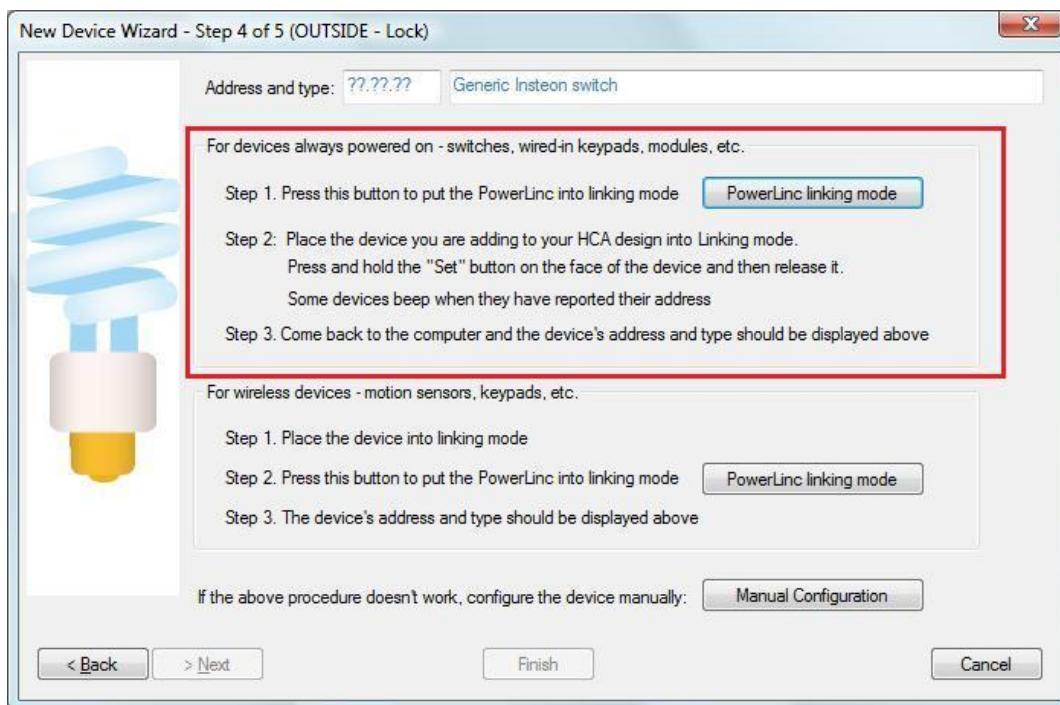
HCA Tech Note 206

Working with the Insteon Remote Control Door Lock Controller

<http://www.smarthome.com/insteon-2862-222-lock-controller.html>

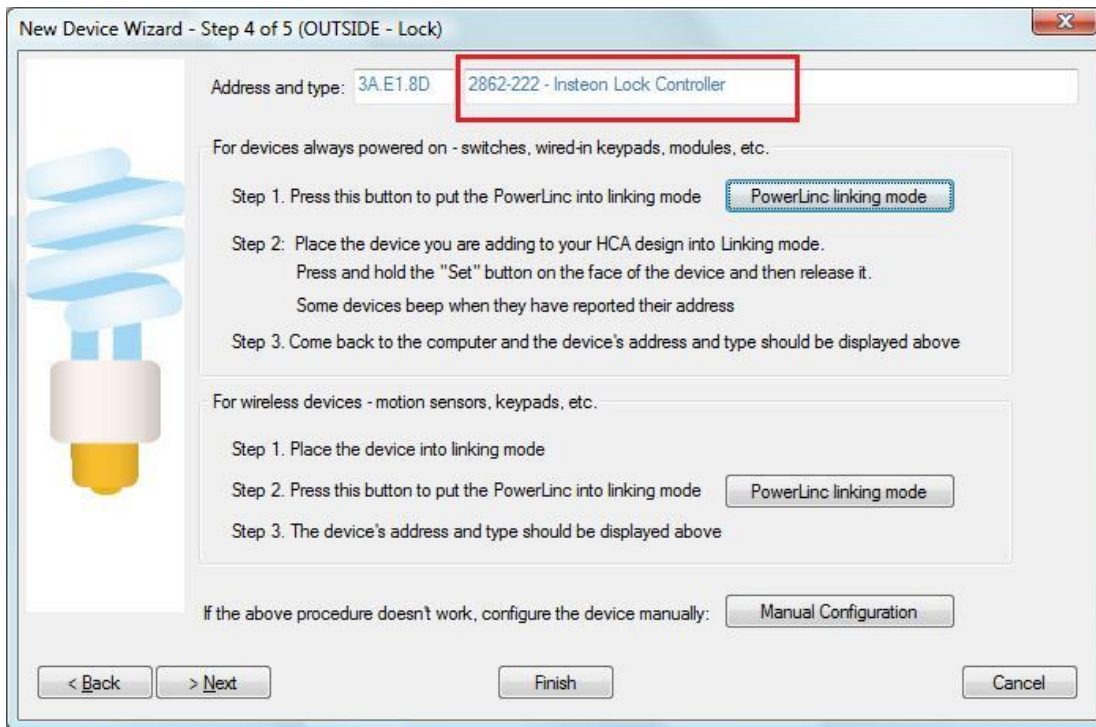
Using the Door Lock Controller with HCA starts by adding it to your design. You need to be able to access the "Set" button on it to establish a link to it. The set button is on the right side of the device.

In the Add Wizard on step 3 choose "Insteon" as the manufacturer and then press the Next button. In step 4 before pressing the dialog button to put the PowerLinc into linking mode, place the device into linking mode by pressing and holding its set button until it enters linking mode. Then press the PowerLinc button in the dialog to complete the link.





HCA Tech Note 206



The Insteon lock controller is a troublesome device in that various firmware versions do somewhat different things. Here are some suggestions that hopefully will work with most generation devices.

The best way to handle the lock is to create two programs – one called LOCK and the other UNLOCK.

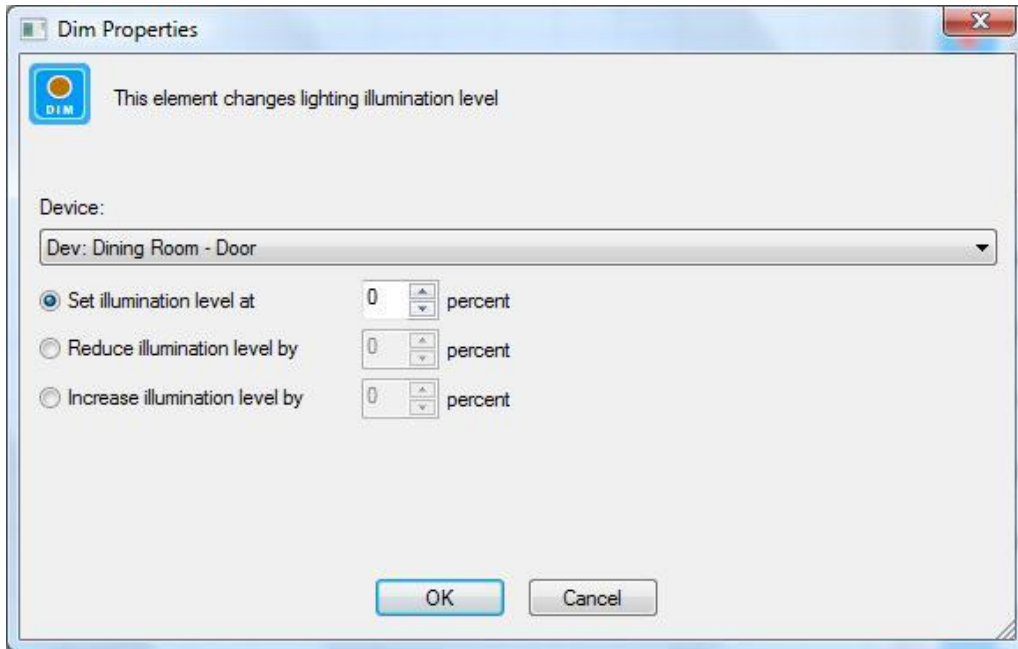
The programs consist of 1 element each – aside from the “Start here” of course.

The LOCK program uses the ON element and specifies the lock device. Running the program should lock the door.

The UNLOCK programs uses the DIM element and specifies the device and the level as 0. Running the program should unlock the door. Some Lock control device firmware versions respond to the OFF command and others do not. The DIM method to unlock was tested with the 2862-222 marked as “Rev 3.0”



HCA Tech Note 206



##end##